

Year 1: Plants

WHAT?

RECOGNISE BY SIGHT:

Rose Bush



Sunflower



Dandelion



RECOGNISE BY SIGHT:

Oak Tree



Birch Tree



Horse Chestnut Tree



TYPES OF TREE:

Evergreen trees maintain their leaves throughout the year.

Deciduous trees shed their leaves in autumn.

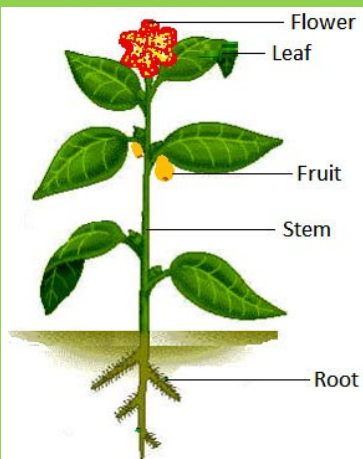


Deciduous



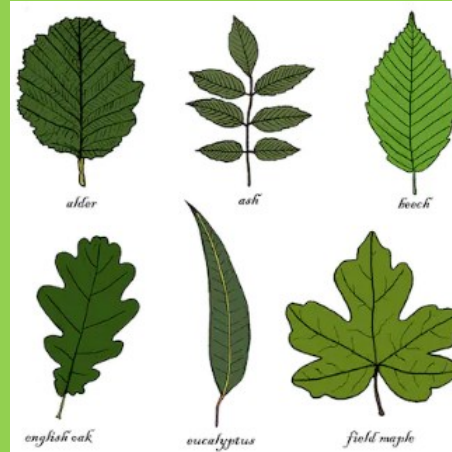
Evergreen

PARTS OF A PLANT:



IDENTIFYING TREES:

Trees can be identified by their leaves.



GROWING PLANTS & TREES:

Plants and trees produce seeds.

A seed is a tiny parcel containing everything a new plant needs to start growing.

Plants can be grown when a seed falls to the ground.



KEY VOCABULARY



BULB: the thing from which new plants grow



DECIDUOUS: a tree that loses its leaves in autumn every year



EVERGREEN: a tree that does not lose its leaves and whose leaves stay green all year.



FLOWER: part of a plant that's brightly coloured and grows at the end of the stem



IDENTIFY: indicate who or what something is



LEAVES: the part of a plant or tree that is flat, thick and often green.



PLANTS: living things that grow on Earth and have a stem, leaves and roots.



ROOTS: the parts of plants that grow underground.



SEEDS: a small, hard part from which a new plant grows.



STEM: the main body or stalk of a plant.



TREE: a tall plant that has a hard trunk, branches, and leaves structure



TRUNK: a large stem of a tree from where branches grow