

Friday 24th May 2024

WEEKLY NEWSLETTER

*With knowledge we can know, with
faith and love we can
change the world.*

'Go and do likewise' Luke 10:37

As we flourish, others do too.

SCHOOL VALUES:

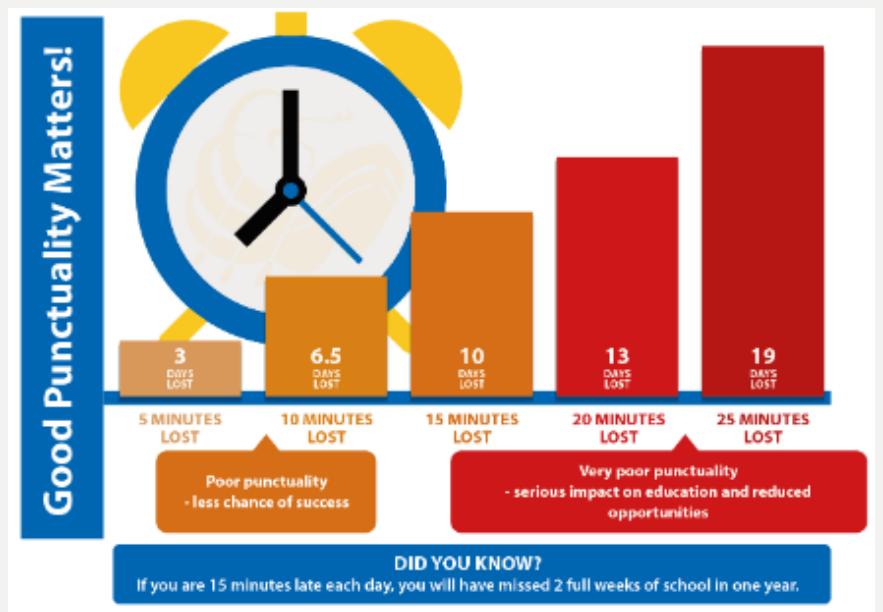
- LOVE
- COMPASSION
- FORGIVENESS

WHAT A WONDERFUL HALF TERM OF LEARNING! SCHOOL HAS BEEN BUZZING WITH CHILDREN WORKING HARD, PRACTICING FOR PRODUCTIONS AND WE HAVE HAD SOME WONDERFUL VISITORS IN TO SCHOOL.

WE WOULD LIKE TO THANK YOU FOR YOUR SUPPORT AND WE LOOK FORWARD TO CONTINUING TO WORK TOGETHER IN THE LAST TERM OF THE ACADEMIC YEAR!

STAFF CAR PARK: PLEASE NOTE THE CAR PARK IS FOR STAFF USE ONLY. DO NOT USE THIS DURING SCHOOL DROP OFF OR COLLECTION. THANK YOU FOR YOUR CO-OPERATION.

SCHOOL GATES: SCHOOL GATES OPEN AT 8.45 AND CLOSE AT 8.55 TO ALLOW FOR A PROMPT START TO THE SCHOOL DAY. ANYONE ARRIVING AFTER THIS TIME WILL NEED TO ENTER THROUGH THE MAIN RECEPTION.



KEY DATES FOR THE DIARY:

- FRIDAY 24TH MAY- SCHOOL BREAKS UP FOR SPRING BANK HOLIDAY
- MONDAY 10TH JUNE- SCHOOL RE-OPENS FOR SUMMER TERM TWO
- W/C 10TH JUNE- YEAR 1 PHONICS SCREENING CHECK
- WEDNESDAY 19TH JUNE- ARTS FESTIVAL YEAR 5
- THURSDAY 4TH JULY- YEAR 6 TRANSITION DAY AT CARLTON OUTWOOD
- WEDNESDAY 10TH JULY- SPORTS DAY (KSI AM, KS2 PM)
- MONDAY 22ND JULY- YEAR 6 LEAVERS MASS IN CHURCH
- THURSDAY 25TH JULY- Y6 LEAVERS ASSEMBLY FOR PARENTS

Y4 PARENTS, A REMINDER OF THE DATES AND TIMES OF THE MULTIPLICATION CHECK BELOW:

THE MULTIPLICATION TABLES CHECK (MTC) IS STATUTORY FOR ALL YEAR 4 PUPILS REGISTERED AT STATE-FUNDED MAINTAINED SCHOOLS, SPECIAL SCHOOLS OR ACADEMIES, INCLUDING FREE SCHOOLS, IN ENGLAND. THE PURPOSE OF THE MTC IS TO DETERMINE WHETHER PUPILS CAN RECALL THEIR TIMES TABLES FLUENTLY, WHICH IS ESSENTIAL FOR FUTURE SUCCESS IN MATHEMATICS. IT WILL HELP SCHOOLS TO IDENTIFY PUPILS WHO HAVE NOT YET MASTERED THEIR TIMES TABLES, SO THAT ADDITIONAL SUPPORT CAN BE PROVIDED. IN 2024, SCHOOLS MUST ADMINISTER THE MTC TO ALL ELIGIBLE YEAR 4 PUPILS BETWEEN MONDAY 3 JUNE AND FRIDAY 14 JUNE



YEAR ONE PARENTS:

KS1 PHONICS SCREENING CHECK 2024

WHAT

- The test is administered 1:1 to each pupil in school by a teacher
- The check contains 40 words divided into two sections of 20 words
- Both sections contain a mixture of real words and nonsense words (nonsense words are phonically decodable but are not school words)
- Each pupil is awarded a mark between 0 and 40
- There is no formal time limit, but each check takes about 10 minutes

WHO

- The phonics screening check (PSC) is a test for Year 1 pupils
- The school will report each child's results by the end of the summer term
- If a pupil does not meet the expected standard at the end of Year 1, a programme of support should be put in place
- The teacher will consider a re-test for the pupil in Year 2

WHY

- The phonics screening test is a statutory assessment that confirms whether or not pupils have met the expected standard in phonics decoding
- It reveals which pupils may need additional support

WHEN

- 10th - 16th June: Schools can choose a day within this week to complete the test
- The test can take place on one day or across several days
- 17th - 23rd June: Timetable variation week for pupils who were absent during PSC week